

# TRILED



WATERPROOF



LED



EMI-EMC



ARMORED VEHICLES

## Description

An interior lighting module with visible or blackout lighting modes, switching to blackout mode depending on pre-determined input cases and light intensity setting by dimmer knob. Verified in accordance with MIL-STD-810G and MIL-STD-461F, MIL-STD-1275D and validated at AV8 8x8 Armoured Vehicle of FNSS & DefTech (Malaysia) also used at two other projects of FNSS.

## Physical Specification

**Dimensions:** 162 x 71 x 37 mm

**Weight:** 467 gr

## Photometric Specification

**Light Intensity (Main Light):** 220 Lux @ 1 m

**FWHM:** 70°

**Total Flux:** 600 Lumen

**Light Intensity (Blackout Light):** 70 Lux @ 1 m

**Dimming Range:** 100%-20%

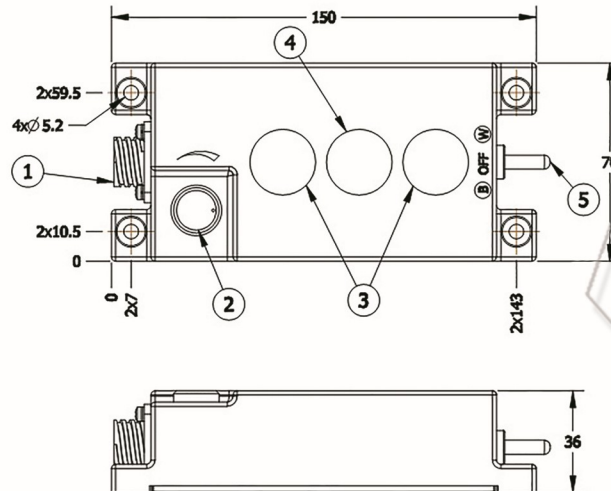
**Blackout Light Colour:** Red, Blue, Green

## Electrical Specification

**Input Voltage:** 16-32 VDC

**Nominal Power:** 8 W

**Connector Type:** CA3102E12SA10PB



DIMMING



DC VOLTAGE



BLACKOUT



ESD PROTECTED



SHELTER