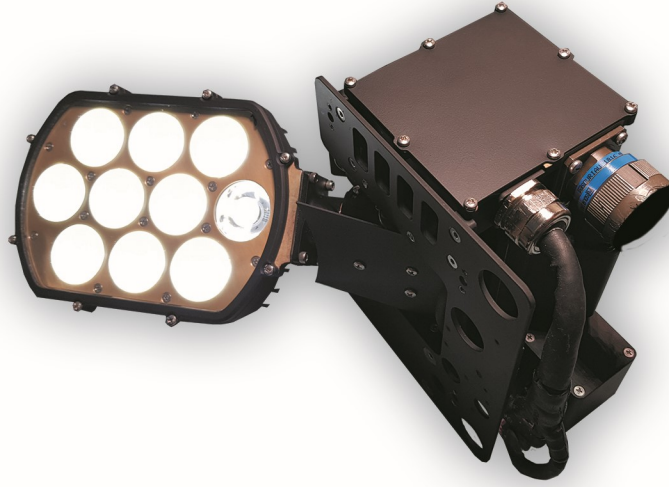


SEARCH LIGHT



WATERPROOF



LED



EMI-EMC

Description

A LED-based search light that is steerable in two axes through the pilot's collective controls with a Nx360° degrees infinite full pan rotation capability. Designed in accordance with MIL-L-81174/2B standard to be the direct replacement for PAR46 type controllable lamps. The intensity of the output beam is dimmable at both visible and IR (infrared) modes. It is comply with RTCA DO-160G, MIL-STD-810G, MIL-STD-461F. To be validated and certified by **EASA** on **GÖKBEY TLUH**.

Physical Specification

Dimensions: 295x96x159 mm

Weight: 2950 gr +/- 100 gr

Extend Range: Minimum 120° from horizontal position

Pan Range: Infinite, Nx360°

Photometric Specification

Light Intensity: 300,000 cd

Visible Light Beam Width: (@10% peak): $8^\circ \pm 1^\circ$

Infrared Mode Output Intensity: 20 NRI

Infrared Mode Beam Width: (@10% peak): $13^\circ \pm 2^\circ$

Infrared Light Dominant Wavelength: 850nm \pm 10 nm

Electrical Specification

Maximum Visible Light Output Current: 1.5 A @ 28 VDC

Maximum Duty Cycle: 3.5 A @ 28 VDC



DIMMING



DC VOLTAGE



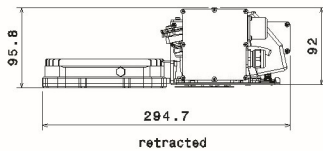
INFRARED



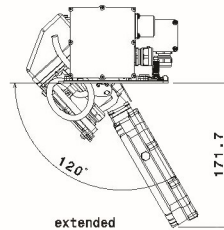
ESD PROTECTED



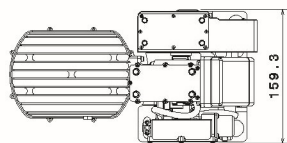
AIRCRAFT



retracted



extended



extended and rotated